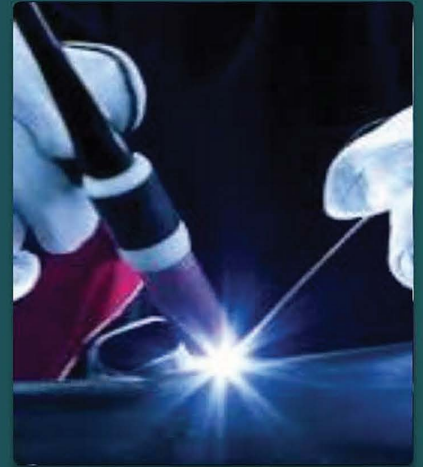
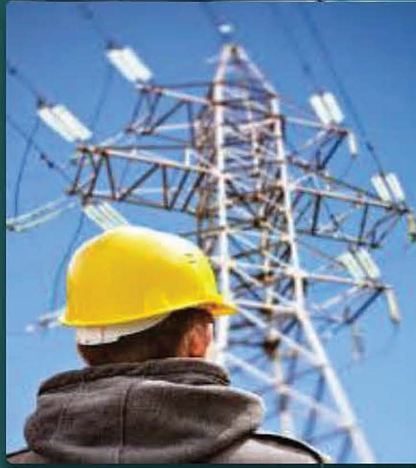


# BURJ AL-ARAB CO.

For General Contracts & Oil Services



**COMPANY ADDRESS:** Iraq – Wasit – Kut – Al-Anqa Building  
**CONTACT US:** +964 773 344 5311 --+964 780 443 3320  
**EMAIL:** burjalarab2004@gmail.com  
**WEBSITE:** burj-alarab.iq



# BURJ AL-ARAB CO.

For General Contracts & Oil Services



## Introduction

BURJ AL-ARAB COMPANY IS ONE OF THE LARGER GENERAL CONTRACTING AND OIL SERVICE COMPANIES SPECIALIZED. IT HAS BEEN IN THE CONSTRUCTION INDUSTRY FOR MORE THAN TWENTY YEARS WAS FOUNDED IN 1995 IN IRAQ TO ENGAGE IN THE CONSTRUCTION INDUSTRY. IT HAS GROWN TO BECOME A LEADING GENERAL CONTRACTOR IN IRAQ. BURJ AL-ARAB SUCCESS AND STEADY GROWTH IS ATTRIBUTED TO ITS EXPERIENCE IN PROVIDING QUALITY WORKMANSHIP, TIMELY EXECUTION OF PROJECTS, AND CUSTOMER SATISFACTION.

THE COMPANY IS DEDICATED TO SERVE ITS CUSTOMERS HONESTLY, HENCE HAVE BEEN AWARDED FOR CONFIDENCE. AMONGST OTHER CONSTRUCTION COMPANIES IN /RAO .BURJ AL-ARAB GENERAL CONTRACTING COMPANY IS UPHOLDING A REPUTATION OF HIGHLY RELIABLE AND EFFICIENT SUPPLIER OF CONSTRUCTION RELATED SERVICES. TODAY, DUE TO THE HARD WORK AND DEDICATION OF ITS MANAGEMENT AND STAFF, THE COMPANY HAS GROWN CONSIDERABLY AND ESTABLISHED ITSELF AS ONE OF THE LEADING CONTRACTING COMPANIES IN THE IRAQ. AMONGST OTHER GENERAL CONTRACTING COMPANIES BURJ AL-ARAB IS KNOWN FOR ITS UNPRECEDENTED QUALITY AND THE FASTEST EXECUTION OF ROAD CONSTRUCTION, PIPELINE AND FOUNDATION WORKS AND OTHER VARIOUS CONSTRUCTION RELATED PROJECTS. BURJ AL-ARAB WELL DISTINGUISHED FOR ITS EXCEPTIONAL LEVEL OF SAFETY AND ENVIRONMENTAL A W A R E N E S S .

# BURJ AL-ARAB CO.

For General Contracts & Oil Services



The company is equipped with a highly professional team.

The Company believes in the integration with the client to provide high quality projects and the commitment in handing over the completed task on time which is a feature that distinguishes Burj Al-Arab General contracting Co. from most of other companies in the same industry. This ability has contributed enormously to the growth and success of the company.

A wide horizon of vision and end product-oriented approach to projects are factors that have been significantly contributing to Burj Al-Arab. We also distinguish the value, input and participation of each member of our experienced and motivated team who adds to the organization's success. Today, with the ambition and determination to expand and diversify our activities, we stand committed to the client's satisfaction, truth & honesty with continuous development.

Our company spares no effort to achieve the commitments to its clients and business associates in all activities, backed by well-trained employees and a highly qualified management in order to ensure that our customers' expectations are met and that their needs are always satisfied. In order for us to maintain the highest industry and to remain as the market leader, we are always open to any feedback from our clients regarding the quality of our infrastructure construction, construction of Pipeline, Tanks, Power Networks,

Civil Works and Oil Service, ready mixed concrete.

# BURJ AL-ARAB CO.

For General Contracts & Oil Services



**Burj Al-Arab** has varied and wide construction experience in fabricating equipment, modularized plants, Plant Management and Operation, Plant turnaround contracts, installation of plants, start up and commissioning of plants

**Burj Al-Arab** clients a Companies.

**Burj Al-Arab Company** is a Iraqi Company involved in contracting and maintenance business. **Burj Al-Arab Company** was established in early 2003 by **Mr. Sabah Nasir** with the vision of creating engineering contracting company for maintenance, operation and quality works dedicated to the esteemed customers trust and reliability.



**Mr. Sabah Nasir**

Authorized manager  
Phone No.009647733445311  
sabahnasir@yahoo.com

**Iraq-Wasit-Kut**

# BURJ AL-ARAB CO.

For General Contracts & Oil Services



Also we have strengthened our company with highly experienced quality Conscious Engineers, Technicians and Office Staffs.

The engineers are having (10) years experience in construction of Multi storied Buildings, Box Culverts, Bridges (under pass & fly over), Heavy RCC foundations for erection of machineries, Telecom Towers, RCC Piles, Cuttings and Forming ,laying of Pipelines for oil , gas and water and Supply and fabrication of steel structures for the Construction of industrial sheds etc.

**Burj Al-Arab Company** has played a prominent role in the construction of many fundamental infrastructures and prestigious projects located in KUT & Omara and achieved its strategic construction targets as a leading contracting company. The company achieved its position and reputation by the sincere dedication of both the owners and staff.

## GENERAL INFORMATION:

Establishment Name: **Burj Al-Arab Company.**

Nature of Business: General Contracting and oil services

Year of Establishment: 2003

Country of Registration: Iraq

# BURJ AL-ARAB CO.

For General Contracts & Oil Services



## VISION

**Burj Al-Arab Company**, who believes in the significance of client satisfaction, quality-based management and a culture of progressive development within the company, for a sustainable success in Power and Oil & Gas sectors.

## MISSION

Conform to every valid standard within the context of project at the maximum level; contract agreement conditions, country's legal arrangements/laws, other compulsory standards and to all ethical rules.

The target is to be a sector leader in utilization of modern valid techniques, material and management systems, and to maintain the sustainable development in every area.

## VALUES

**Burj Al-Arab** is Persistent to success, Efficient in work and Watchful to the future & Prioritize and value the most valuable asset of PEW, company employees, and to contribute to their technical and self-development through company's continuous learning environment, and to provide social securities

# BURJ AL-ARAB CO.

For General Contracts & Oil Services



## □ Electrical Engineering

Exploring opportunities in cooperation with international companies, burj al-arab is an active participant in numerous, substantial projects. Electrical Engineering carries out both industrial and domestic works including LV/HV power installation, Installation, Testing and Commissioning of Cathodic Protection System, Comprised of Internal Current Anodes, Junction Boxes, Splice/Terminal Boxes, CP Band Holes, Cables and Conduits. Cable laying and jointing and sub-station installation. Instrumentation Engineering Synchronous to the Electrical Engineering, Instrumentation Engineering was established. Instrumentation engineering covers a wide array of maintenance, overhauling, testing,

## □ Mechanical Engineering

By focusing on supporting the ever increasing need for expert mechanical engineering services, Burj al-arab co carries out projects in the areas of pipeline engineering, storage tank construction, plant assembly, scheduled and unscheduled maintenance and supply service burj al-arab co also undertake diverse mechanical engineering works. Backed up by a quality control and quality assurance inspection team burj al-arab co ensures that all works complies with international standards and codes of practice.

# BURJ AL-ARAB CO.

For General Contracts & Oil Services



## Certificate of Registration ISO

CERTIFICAT\*CERTIFICATE\*СЕРТИФИКАТ\*CERTIFICATO\*SERTIFIKAT



### CERTIFICATE

This is to Certify that the Quality Management System of

**BURJ AL ARAB FOR GENERAL CONTRACTING COMPANY**

**IRAQ - WASIT -AL-KUT -ALMAGHRIB STREET -AL-ANQAA BUILDING**

has been audited and found to comply with the requirements of:

**ISO 9001:2015**  
**Quality Management System**

For the scope of activities described below:

**PROVISION OF GENERAL CONTRACTING AND CIVIL CONSTRUCTION WORKS. SUPPLY AND EXECUTION OF RELATED INFRASTRUCTURE FOR BUILDING AND OIL PROJECTS.**

IAFCode: 28

Certificate Number: INT/EGQ/2509BJ/3304

Surv. Audit on or Before: 18.08.2026

Initial Date of Certification: 19.09.2025

Re-certification Due on: 18.09.2028

Date of Certificate: 19.09.2025

Date of Expiry: 18.09.2028

Director:

Date: 19.09.2025



Validity of this certificate is subject to successful completion of surveillance audit on or before due date, in case surveillance audit not conducted this certificate shall be suspended/cancelled.

For verification and updated information concerning the present certificate visit to [www.thehawk-eye.com](http://www.thehawk-eye.com).

This Certificate is the property of Hawk Eye Certifications Pvt. Ltd. and shall be returned immediately when demanded.

**Hawk Eye Certifications Private Limited**

Wave Silver Tower, Shop No. 422, 4th Floor, Sector-18, Noida-201301 U.P.

[www.thehawk-eye.com](http://www.thehawk-eye.com)

email: [admin@thehawk-eye.com](mailto:admin@thehawk-eye.com)

# BURJ AL-ARAB CO.

For General Contracts & Oil Services



CERTIFICATE\*СЕРТИФИКАТ\*СЕРТИФИКАТО\*СЕРТИФИКАТ



**HAWK EYE**  
Certifications

## CERTIFICATE

This is to Certify that the Environmental Management System of  
**BURJ AL ARAB FOR GENERAL CONTRACTING COMPANY**  
**IRAQ - WASIT -AL-KUT -ALMAGHRIB STREET -AL-ANQAA BUILDING**

has been audited and found to comply with the requirements of:

**ISO 14001:2015**  
**Environmental Management System**

For the scope of activities described below:

**PROVISION OF GENERAL CONTRACTING AND CIVIL CONSTRUCTION WORKS. SUPPLY AND EXECUTION OF RELATED INFRASTRUCTURE FOR BUILDING AND OIL PROJECTS.**

**IAFCode: 28**

Certificate Number: **INT/EGE/2509BJ/3305**

Surv. Audit on or Before: **18.08.2026**

Initial Date of Certification: **19.09.2025**

Re-certification Due on: **18.09.2028**

Date of Certificate: **19.09.2025**

Date of Expiry: **18.09.2028**

Director:

Date: **19.09.2025**



EGAC

Accredited  
EMS Certification  
CAB#012212

This Certificate is the property of Hawk Eye Certifications Pvt. Ltd. and shall be returned immediately when demanded.  
For verification and updated information concerning the present certificate visit to [www.thehawk.cye.com](http://www.thehawk.cye.com)

**Hawk Eye Certifications Private Limited**

Wave Silver Tower, Shop No. 422, 4th Floor, Sector-18, Noida-201301 U.P.

[www.thehawk-eye.com](http://www.thehawk-eye.com)

email: [admin@thehawk-eye.com](mailto:admin@thehawk-eye.com)

# BURJ AL-ARAB CO.

For General Contracts & Oil Services



CERTIFICATE\*СЕРТИФИКАТ\*СЕРТИФИКАТО\*СЕРТИФИКАТ



## CERTIFICATE

This is to Certify that the Occupational Health & Safety Management System of  
**BURJ AL ARAB FOR GENERAL CONTRACTING COMPANY**

**IRAQ - WASIT -AL-KUT -ALMAGHRIB STREET -AL-ANQAA BUILDING**

has been audited and found to comply with the requirements of:

**ISO 45001:2018**  
**Occupational Health & Safety Management System**

For the scope of activities described below:

**PROVISION OF GENERAL CONTRACTING AND CIVIL CONSTRUCTION WORKS, SUPPLY AND EXECUTION OF RELATED INFRASTRUCTURE FOR BUILDING AND OIL PROJECTS.**

**IAFCode: 28**

Certificate Number: **INT/EGO/2509BJ/3306**

Surv. Audit on or Before: **18.08.2026**

Initial Date of Certification: **19.09.2025**

Re-certification Due on: **18.09.2028**

Date of Certificate: **19.09.2025**

Date of Expiry: **18.09.2028**

**Director:**

**Date: 19.09.2025**



Validity of this certificate is subject to successful completion of surveillance audit on or before due date, in case surveillance audit not conducted this certificate shall be suspended/cancelled.

For verification and updated information concerning the present certificate visit to [www.Lhehawk-eye.com](http://www.Lhehawk-eye.com).

This Certificate is the property of Hawk Eye Certifications Pvt. Ltd. and shall be returned immediately when demanded.

**Hawk Eye Certifications Private Limited**

Wave Silver Tower, Shop No. 422, 4th Floor, Sector-18, Noida-201301 U.P.

[www.thehawk-eye.com](http://www.thehawk-eye.com)

email: [admin@thehawk-eye.com](mailto:admin@thehawk-eye.com)

# BURJ AL-ARAB CO.

For General Contracts & Oil Services



## *Our Clients*

**Burj Al-Arab** has successfully associated with many clients from different industries such as:

*Petrochina*

*CPP*

*CSI*

*CPECC*

*CNOOC*

*HERMIC*

*CCPEC*

*DPAB*

*EARTH TIC*

*TETRATIC*

*Al-Waha*

*MercyCorps*

*USAID*

*Internal Medical Corps*

*Ministry of Oil*

*Ministry of Industry*

*US Army/ Missan Local Government*

*Directorate of Roads and Bridges*

*Wasit Health Office*

*Ministry of Finance*

*Ministry of Electricity*

*Ministry of Defense*

*Ministry of Commerce*

*Directorate of Water and resources*

*Ministry of Municipalities*

*Wasit Sewage Directorate*

# BURJ AL-ARAB CO.

For General Contracts & Oil Services

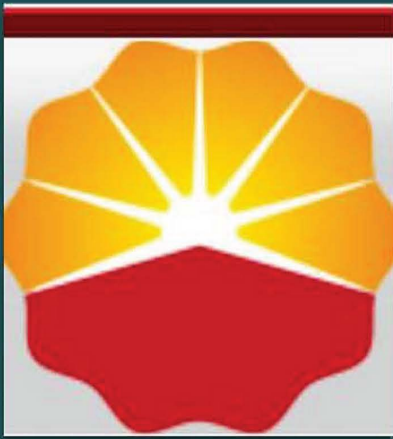
BURJ AL-ARAB

بج-1 ; 11-ال-جج



iiJhiwI wIax.,llg iiall uJJglioll  
General Contracts and Oil Services

## Clients



# BURJ AL-ARAB CO.

For General Contracts & Oil Services



## Our services



### Mechanical work

- 1- Construction of Pipelines .
- 2-Construction of steel storage tanks
- 3- Maintenance of Oil & Gas and Petrochemical Installations



### Electrical work

- 1-Power Generation and Substations
- 2-Construction, Building & Erection Power towers ,Heavy RCC Foundations for Erection of Machineries, Telecom Towers



### Civil work

- 1-Construction of Multi-Storied Buildings
- 2-Concrete Production and Construction
- 3-Roads and Infrastructure
- 4-Asphalt Production and Construction

# 1- Mechanical Work

- ▶ 1- Pipeline construction.
- ▶ 2- Piping networks .
- ▶ 3- Fuel storage tanks.
- ▶ 4- Fabrication works
- ▶ 5- Equipment Installation

## Some of the major services provided are the following

- · Radiographic Examination
- · Ultrasonic Examination
- · Magnetic Particle Examination
- · Liquid Dye-Penetrant Examination
- · Alloy Verification of Steel
- · Hardness Test of metal
- · Painting & Coating - Thickness Check,  
Holiday Test,  
Adhesion Test etc.
- · Supply of Inspection Engineers, Inspectors  
& NDT
- Technicians.

## Activities of Pipeline construction

- Right of Way.
- Pipe storage and stringing of pipe.
- Trenching.
- Welding and weld inspection.
- Wrapping of joints.
- Visual wrap inspection.
- Holiday Detection
- Air tests.
- Ditching.
- Installation of valves.
- Tie-ins including valve installations etc.
- Backfilling.
- Cleaning.
- Gauging Pig.
- Hydro test.
- Additional air test.
- Dewatering.
- Magnetic cleaning pig.
- Geometric pig.
- Drying & commissioning.

**BURJ AL-ARAB CO.**  
For General Contracts & Oil Services



## **MAINLINE WELDING**

- **STANDARDS/CODES.**
- **WELDING TECHNIQUES.**
- **WELDING PROCEDURES.**
- **WELDER'S QUALIFICATION TEST.**



**BURJ AL-ARAB CO.**  
For General Contracts & Oil Services



# Summery For :

## 1- Mechanical Work

### A- Pipeline Construction

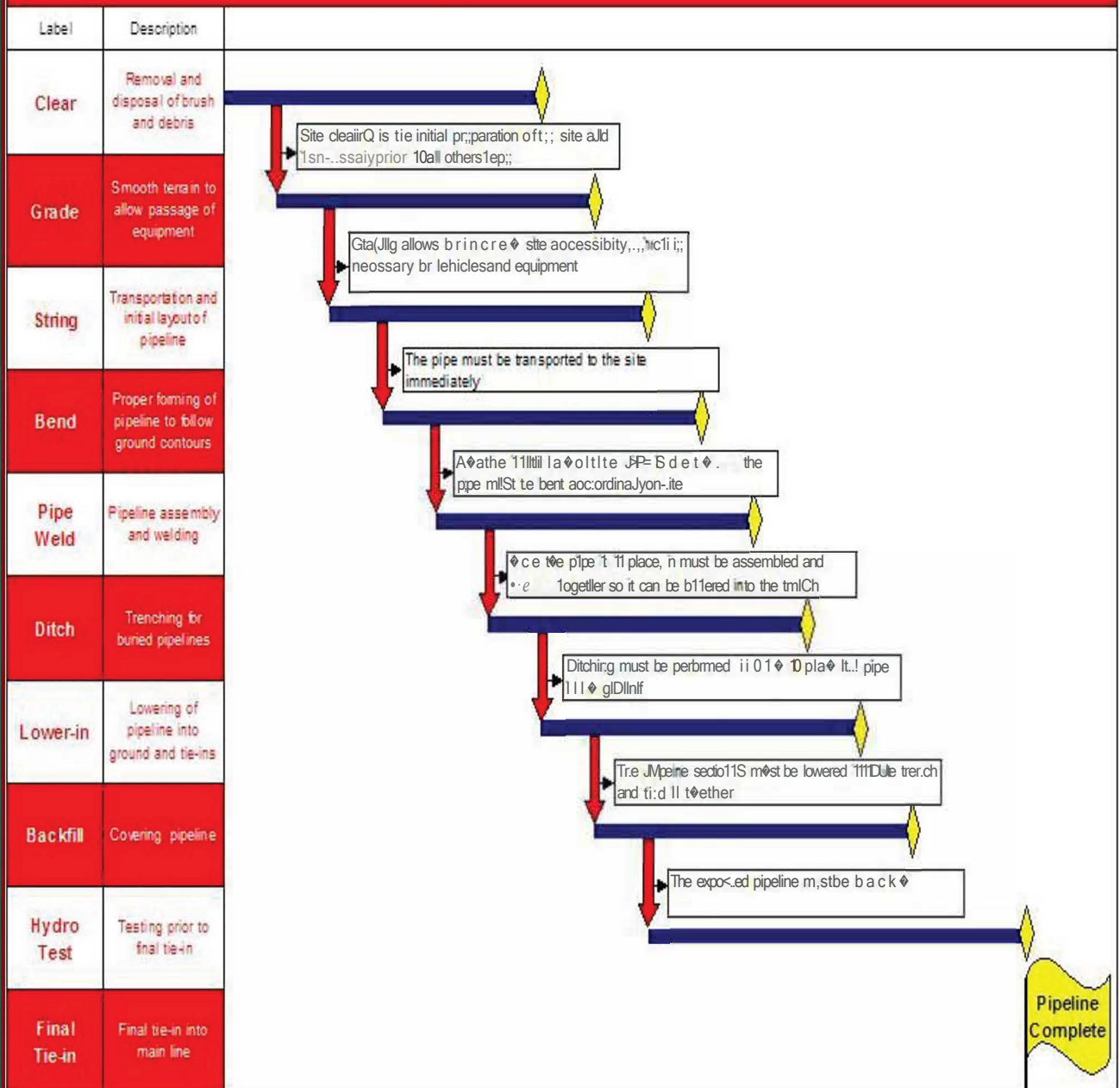


# BURJ AL-ARAB CO.

For General Contracts & Oil Services



## Overland Pipeline Construction Sequence



## A- Pipeline Construction

### 1-Survey:

It Is Surveyed, Cleared Of Brush And Trees, And Levelled To Give Workers And Equipment Access To Build, Inspect And Maintain The Pipeline.

Detailed Engineering, Environmental And Cultural Surveys Are Conducted To Determine The Most

Suitable Construction Techniques.



## A- Pipeline Construction

### 2- Route Cleaning :

It Is Cleared Of Brush And Trees, Graded Along The Pipeline Route And Levelled To Give Workers And Equipment Access To Build, Inspect And Maintain The Pipeline



# A- Pipeline Construction

## 3 - Hauling And Stringing The Pipe:

Lengths Of Pipe Are Moved From Stockpile Sites To The Right-of-way. They Are Lined Up Along The Right-of-way, Ready For Welding. Trucks Will Carry The Line Pipe Along The ROW, And Side boom Tractors Will Unload The Joints Of Pipe From The Stringing Trucks And Lay Them End To End Beside The Ditch Line For Future Line-up And Welding.



## A- Pipeline Construction

### 4- Welding Joints:

Welding will be performed by qualified welders to the specifications of and in accordance with all applicable state and municipal ordinances, rules, and regulations. Welding is a technique where another metal is melted and used to join lengths of pipe. The area of the weld where the two pipes are joined is actually stronger than the pipe, by design. Welding is the pivotal operation in pipeline construction every pipe will undergo various steps of welding process. This step is repeated a number of times until multiple pipe sections are joined to form a pipeline. Automatic welding machines are used where possible and some hand welding also takes place. A rigorous quality assurance and quality control program is followed to ensure the strength and quality of the welding.



# BURJ AL-ARAB CO.

For General Contracts & Oil Services



## A- Pipeline Construction

### 5- Inspection And NDT:

All welds will be 100% radiographically inspected. When a pipeline is built, inspection personnel may use visual, X-ray, magnetic particle, ultrasonic and other inspection methods to evaluate the welds and ensure that they are of high quality. All the welded joints are subject to VT, RT, MT, PT & UT to ensure they meet the international standards.

**MT**  
E m a

**RT**  
E m a

**PT**  
MORE ▶

**PMI**  
MORE ▶

**UT**  
MORE ▶

**ECT**  
MORE ▶

**NDT**  
Equipment

PICO-MAG System

MT-Yoke 1

Kodak X-Ray Films

Portable X-Ray System

Black Light

PICO-MAG Spray

Radiation Warning System

Remote Controller

PICO-Color Check

PMI Analyzer

Ultrasonic Probes

Test Blocks

Ultrasonic Flaw Detector (Phased Array System)

Ultrasonic Thickness Gauges

Multi-channel Eddy Current System

Eddy Current Array System

Eddy Current Testing Probes

## 1-PipelineConstruction

### 6- Heat Treatment PWHT:

Post Weld Heat Treatment (PWHT) defined as any heat treatment after welding, is often used to improve the properties of a weldment. In concept, PWHT can encompass many different potential treatments. Heat treatment will be apply for the welded joints if the process required.



# 1-PipelineConstruction

## 7- PIPE COATING:

coating is necessary on all field weld joints made at the site in order to provide a continuous coating along the pipeline. After the pipe has been welded and radiographically inspected (x-rayed), the weld joints will be coated using either heat shrink polyethylene sleeves or polythen tape and tape primer. high-performance heat-shrinkable sleeve systems that provide equivalent corrosion protection performance on field-applied girth-weld joints Each weld is grit blasted and covered with a protected coating to prevent corrosion and protect against mechanical impacts



Before the coating  
1- sand blasting



Before the coating  
2- hardness



Before the coating  
3- UT test



# 1-PipelineConstruction

## 8- HOLIDAY TEST :

coating must be applied as a continuous film to perform its intended function. Early failure will occur If there is a discontinuity—a holiday, as it is commonly called—such as a pinhole, void, crack, thin spot, foreign inclusion, or contaminant in the coating film. Many of these defects are not readily visible, but they can be located using holiday detection equipment. Holiday detection is typically performed on coating systems designed for critical service such as immersion or chemical storage. It is also conducted on coating systems applied to steel that is in contact with soil and/or constantly wet. Examples include buried pipelines, the under sides of tanks, and sheet piling. This month's Applicator Training Bulletin discusses how holiday detectors work, the operation of low-voltage and high-voltage detectors on coated steel, holiday detection of coatings on concrete substrates, and repair of holidays.



## 1-PipelineConstruction

### 8-PIPELINE LOWERING IN TRENCH:

- Width checked at bottom of trench at 4 locations and found . 1.2 m
- Trench bottom is free from rocky strata
- Soft padding on the bottom of trench done
- Night caps are provided on open ends of pipe section.
- Sling of side boom is not be on field joint coating.
- Pipe is lowered in the right side of the trench.
- Distance of above pipe from main pipe is 400mm.

# 1-PipelineConstruction

## 9- BACKFILLING

Backfilling will begin after a section of pipe has been successfully placed in the ditch. Trench breakers would then be installed, as needed. Prior to backfilling the trench, the equipment operator will check the trench for wildlife and/or livestock and will be sure any wildlife or livestock found in the trench is removed before backfilling begins. Backfill will be conducted using a bulldozer, rotary auger backfilled, padding machine, or other suitable equipment. Backfilling the trench will generally use the subsoil previously excavated from the trench, except in rocky areas where imported select fill material may be needed. Backfill will be graded and compacted, where necessary for ground stability, by tamping or walking with a wheeled or tracked vehicle. Compaction will be performed to the extent that there are no voids in the trench. Backfill of trenches will not be performed where the soil is frozen to the extent that large consolidated masses are formed that will not break down. In irrigated agricultural areas, the backfill will be replaced at the same compaction density as the adjacent undisturbed soil. Backfill of trench at road crossings will be in accordance with the crossing permit. Any excavated materials or materials unfit for backfill will either be utilized elsewhere or properly disposed of in conformance with applicable laws or regulations. The Contractor will place a mound over the trench approximately 0.5-feet in height to account for subsidence (except for at road crossings where compaction will be adequate to keep

# 1-PipelineConstruction

## 10- HYDRO TEST :

Pipelines would be pressure tested with water after the trench is backfilled. The integrity of the pipeline is further verified using hydrostatic testing in accordance with international standards. The pipeline is capped with test manifolds and water is pumped in to pressure the maximum allowable operating pressure.



Before the hydro test  
1- water filling



Before the hydro test  
2- recorder & gauge



After the hydro test  
3- pig



# BURJ AL-ARAB CO.

For General Contracts & Oil Services

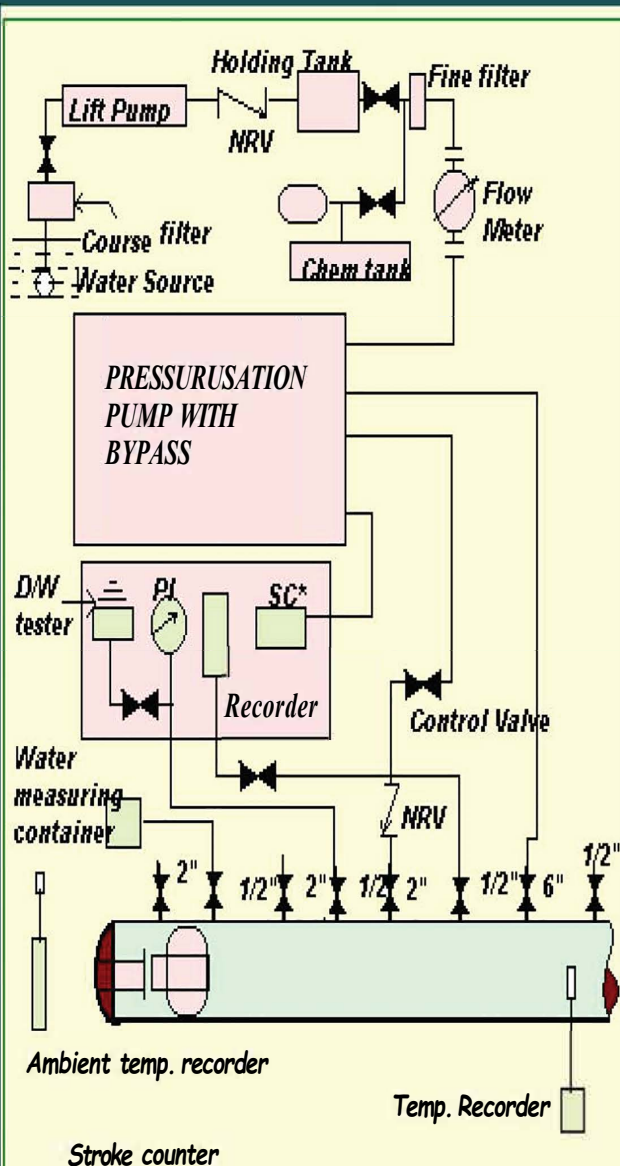
BURJ AL-ARAB

بـ.جـ.اـ.رـبـ



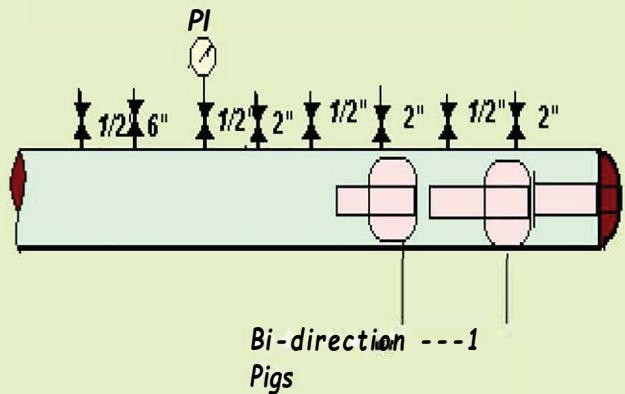
Oil Services

# Hydrostatic Testing



**PIG LAUNCHING TRAP**

## Hydrostatic Test



**PIG RECEIVING TRAP**

## tips for hydrostatic testing

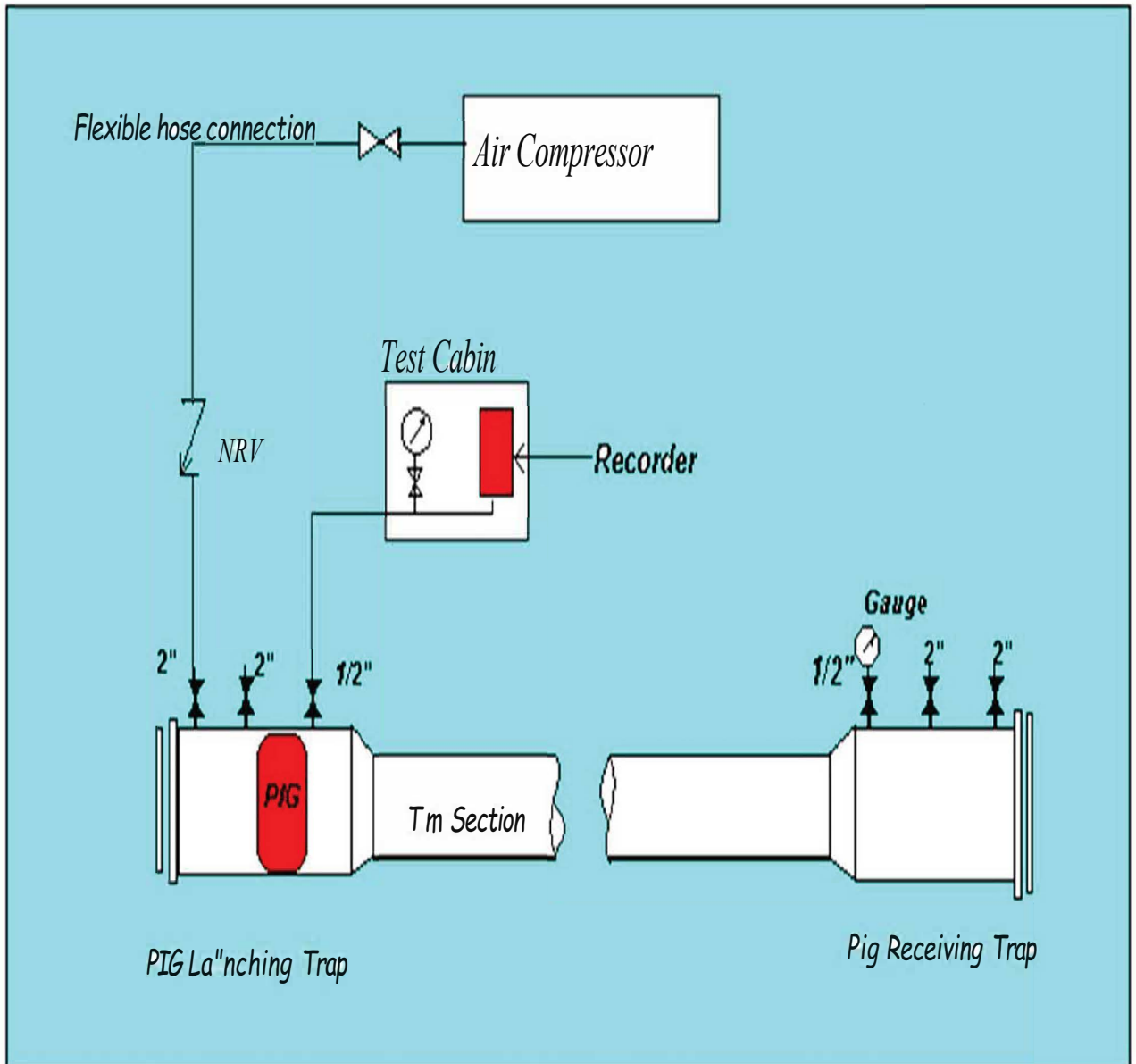
- ✓ gauge plate of 95% id and 10 mm thickness shall be passed through the section after cleaning of the pipe.
- ✓ gauge plate with  $< 2$  mm scratch on side wall and with no dent is acceptable.
- ✓ checking the condition and sequence of pigs in the hydrostatic header.

# Hydrostatic Testing

- ✓ Only qualified welder is allowed to perform welding of header.
- ✓ Check rating and condition of header fittings.
- ✓ Use the filling water from tested water source only.
- ✓ Fill 500 mtrs. Of water before first pig and 1000 mtr water between first and second pig.
- ✓ Final filling shall be done with fill rate of 2 km/hrs.



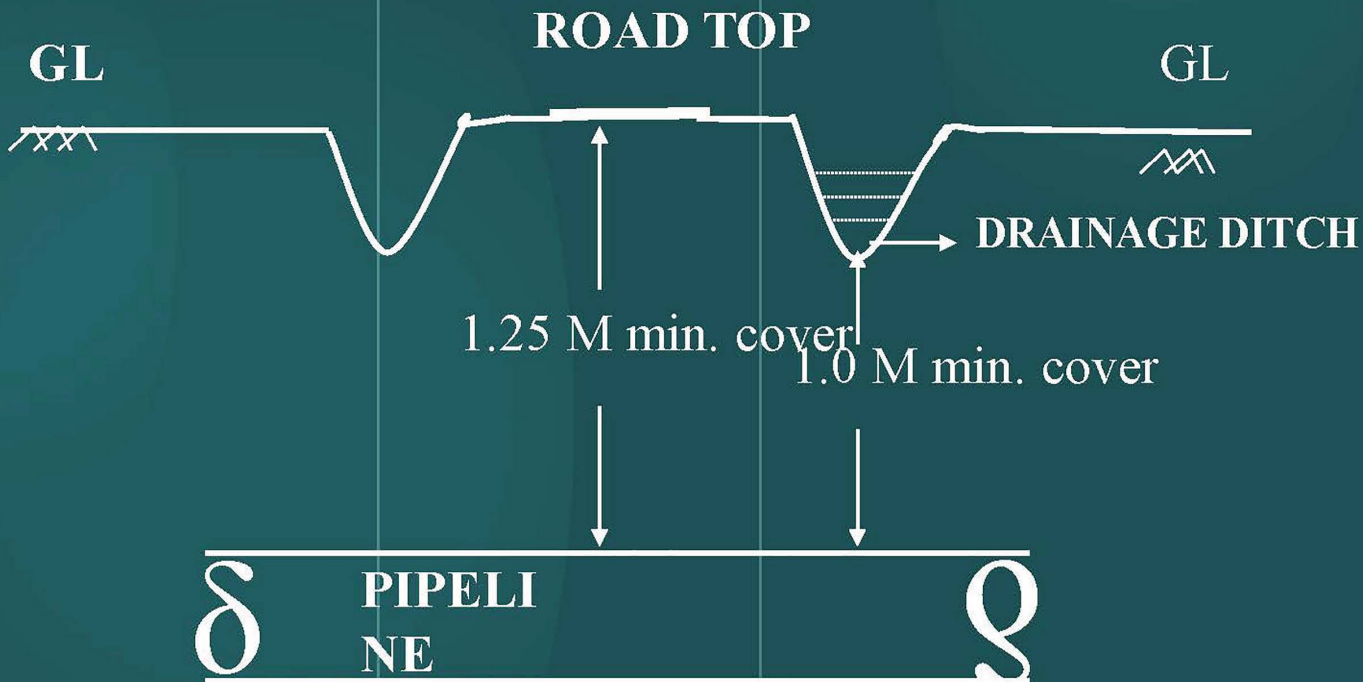
## Cleaning and Gauging Operation



## 11- PIPELINE CROSSING FOR ROAD AND RIVER.

There are two methods for crossing :

- 1- OPEN CUT
- 2- HDD OR NDRC method



# 1-PipelineConstruction

## A- Crossing by HDD NDRC method

HDD is the ideal procedure for laying pipelines quickly, economically and without impacting the environment. The trenchless drilling method with only one start and exit point, means several kilometers of pipelines can be laid beneath rivers, cities, mountains and the countryside. The surface along the pipeline route remains totally untouched. No congestion along traffic arteries, no construction sites in cities, nonnegative impact on nature.



## HDD method, pipelines are laid in three stages.

1- First, a pilot drill is carried out from the entry point. In this process step, a computer-controlled surveying system located behind the drilling bit steers the drill string along the planned route to the exit point on the other side of the obstacle to be crossed. The surveying system, the steering and the drilling tools can be adapted to any soil conditions, thus ensures the success of a p r o j e c t .

2- In the second stage, reaming the pilot drill, the drilling diameter is successively enlarged. To achieve this, the drill bit is replaced by a reamer. The reamer is equipped with jets and cutting tools, enabling it to remove the soil both hydraulically and mechanically. Depending on the soil conditions, a mixture of water and bentonite or other additives can be used for hydraulic excavation. This both supports the bore hole and reduces frictional forces, while allowing the excavated material to be transported to a separation plant on the surface.

## HDD method, pipelines are laid in three stages.

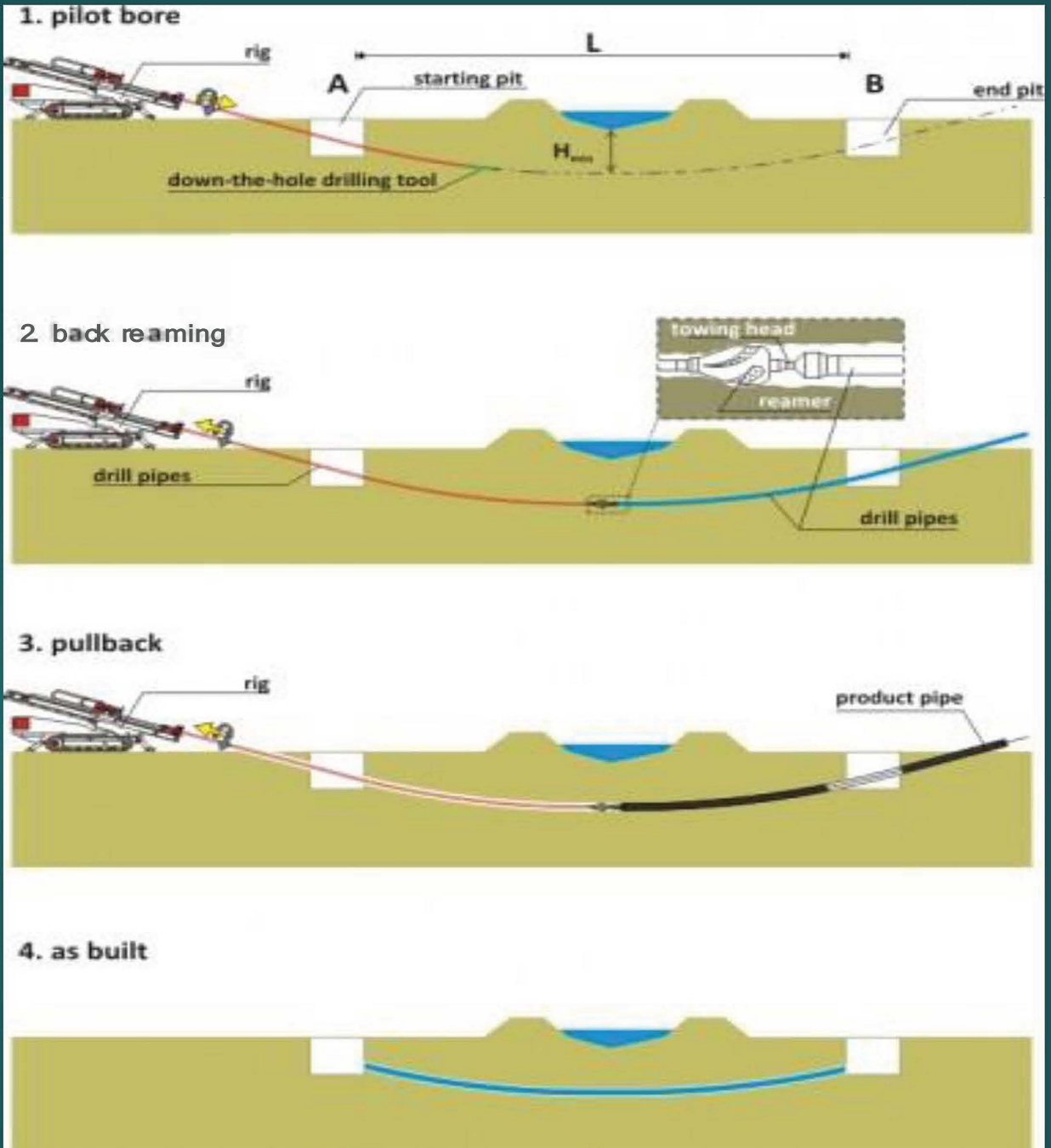
**3- Finally, the prefabricated pipeline or pipe bundle is pulled-back** from the exit point into the enlarged and cleaned bore hole. To do this, the pipeline is connected to the pipe string and pulled back to the entry point. When the pipeline appears at the entry point, it has reached its final and safe position and the pipeline installation is complete.

### Major advantages of horizontal directional drilling are:

1. Direct installation of product pipelines; no casing pipe/tunnel required.
2. Cost effective.
3. Fast pipeline installation Long distance crossings achievable.
4. Small ratio of borehole diameter/pipeline diameter.

# BURJ AL-ARAB CO.

For General Contracts & Oil Services



**BURJ AL-ARAB CO.**  
For General Contracts & Oil Services



# 1-Pipeline Construction

## B-Crossing by HDD **UGNB-3M4**

The Horizontal Directional Drilling Machine UGNB-3M4 is intended for drilling horizontal bore holes at a distance up to 200m under railways and roads, in bounded conditions with capital construction objects located near.

### the Horizontal Directional Drilling Machine UGNB-3M4



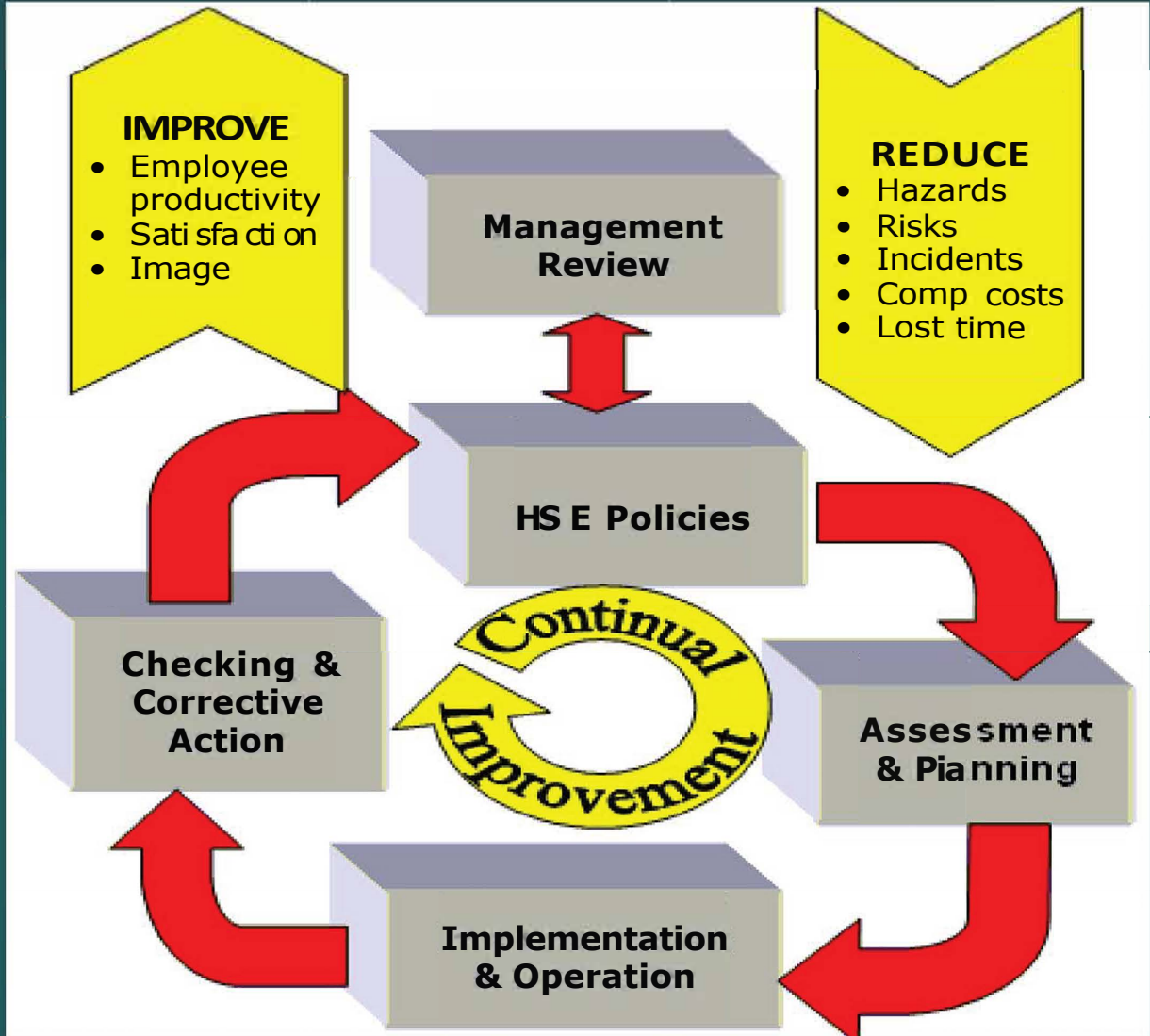
# BURJ AL-ARAB CO.

For General Contracts & Oil Services



## 12-SAFETY:

## MANUAL / STATEMENT



# BURJ AL-ARAB CO.

For General Contracts & Oil Services



## 12-SAFETY:

### GENERAL AND SAFETY CONDITIONS

1. Burj Al-Arab Company shall ensure that all Burj Al-Arab personnel will adhere to Safety Rules and loss Prevention Procedures as outlined in Burj Al-Arab Handbook and safety guidelines, which was issued to Safety Officers and Site Supervisors by the Burj Al-arab Safety Dept... For an additional copy the document please contact the Burj Al-Arab Safety Department Representative.
2. Burj Al-Arab company shall be responsible for the safety of his personnel on the Jobsite and shall ensure proper safety equipment is worn.
3. Burj Al-Arab company shall be responsible for obtaining at his own expense, all clearance documents, including but without limitations: Personnel I.D. Cards, vehicle clearance documents, gate passes, work permits etc.
4. It shall be Burj Al-Arab Company responsibility to visit the jobsite and verify all Information regarding site conditions, accessibility, adjoining structures and dimensional accuracy of all drawings prior to submitting his bid and or starting a job.

## 12-SAFETY :

### GENERAL AND SAFETY CONDITIONS

5. Burj Al-Arab Company shall indicate and identify the person who will be on site at all Times in a supervisor capacity and is authorized to receive a Contractor Work Permit.
6. Burj Al-Arab Company shall be responsible for keeping the work area in a clean Condition. All trash, rags, paper and other discarded materials are to be picked up and placed in designated containers for removal.
7. All solid and liquid waste should be disposed in the appropriate disposal locations designated by the Main Contractor.
8. Burj Al-Arab Company must report to the respective Area Managers and Engineer at Maintenance Bldg., to provide manpower list daily of personnel working at project site. This list to be submitted must accurately reflects the names and badge numbers of personnel working in project site on specific day.
9. Hot food will not be allowed into project site due to difficulties in inspecting contents. The food container and contents must be inspected.
10. Burj Al-Arab Company personnel are not allowed to leave their jobsite without reason and wander around in the project area, nor sleep within the project site area.
11. The Burj Al-Arab supervisor will be issued yellow cards for each Employee along with the permit daily.
12. The yellow cards will indicate the jobsite/area of work within project location. The cards have to be surrendered to Operations when closing the work permit each day.

## 12-SAFETY :

### **Burj Al-Arab SAFETY PLANS AND EMERGENCY RESPONSE PROCEDURE:**

It is the responsibility of each RGC employee to familiarize himself with the Main Contractor safety plan and emergency procedures. Details of the procedures may be obtained from the Main Contractor contracts representatives:

#### **1. ACTION TO BE TAKEN:**

At the sound of the siren all vehicles are to stop immediately, (last minute plan exit are not be attempted) and parked on the roadside away from the immediate area of danger. Driver as well as passengers is to proceed on foot to the designated assembly area of the plant.

The obvious reason is to limit non-essential traffic. A moving vehicle might hinder fire engines and ambulances or could become an ignition source if a gas cloud exists.

In a plant emergency the siren will sound for two (2) minutes. When the emergency is over "All Clear Siren" will sound for ten (10) seconds interval, repeated three (3) times. After an emergency workers are not to resume work until their supervisor obtains a new work permit. However, every Saturday at 12:00 noon and 1:00 P.M. respectively the emergency and stop work alarm systems are tested. Take no action at this time unless you see something seriously wrong.

## 12-SAFETY :

### **Burj Al-Arab SAFETY PLANS AND EMERGENCY RESPONSE PROCEDURE:**

The following steps are to be taken when hearing the plant emergency siren/stop work alarm:

#### **DISASTER SIREN:**

- a. All work/vehicles are to be stopped at once ! Last minute exist by vehicles are to be parked on the roadside away from the immediate area of danger.
  - b. Shut down any rotary ignition equipment.
  - c. Follow a safe route upwind from gas and bypass the emergency site.
  - d. Proceed on foot, facing the traffic, to the assembly point, located in the designated area of the plant.
- Note: Further action will be communicated by Operations personnel
- e. Assemble your people, taken roll call and make sure every Man is accounted for. Report any missing employee to your Main Contractor Representative.
  - f. Wait for the “All Clear Siren”, which will sound for 10 seconds with 10 seconds intervals repeated three (3) times.
  - g. After hearing the “All Clear Siren” you are to proceed back to the work area and request a new work permit before resuming work.

## 12-SAFETY :

### **Burj Al-Arab SAFETY PLANS AND EMERGENCY RESPONSE PROCEDURE:**

**NOTE:** The emergency siren is tested every Saturday at 12:00 noon, Listen and be familiar with it.

#### **STOP WORK ALARM:**

- a. Stop work at once, shutting down all rotary or ignition Equipment.
- b. Proceed immediately with your personnel to the respective assembly area/shelter and await further action as instructed by the Safety Officer or any authorized delegate.
- c. Return to work “only” after Operations has given the approval to do so, and secure a “new work permit”.

**NOTE:** Unit Stop Work Alarms are tested every Saturday starting at 1:00 p.m. throughout the plant.

#### **2. CONTACT AFTER OFFICE HOURS:**

The Burj Al-Arab Company’s Supervisor shall give his home address and the telephone number (and that of his replacement) to the Main Contractor Representative so that he may be contacted after hours in case of an emergency involving the Burj Al-Arab’s job or equipment.

## 12-SAFETY :

### **Burj Al-Arab SAFETY PLANS AND EMERGENCY RESPONSE PROCEDURE:**

#### **3. HELP IN AN EMERGENCY:**

**3.1** In the event of an emergency situation (serious personal Injury, fire, critical damage to operating equipment, etc.) help may be obtained by contacting the nearest Main Contractor Main Gate. This may be done:

A. By telephone. Dial the emergency number.

B. By radio. If the Main gate cannot be contacted directly, radio an operation that has a telephone in the Main Contractor system and ask them to dial emergency number.

C. By messenger. Send a messenger to the nearest telephone, radio, or Main Contractor Main Gate, whichever is the nearest.

**3.2** When transmitting a message by telephone, radio, or Messenger, ensure that you clearly identify yourself by giving:

- Name
- Badge Number
- Exact Location
- Nature of emergency

## 12-SAFETY :

### **Burj Al-Arab SAFETY PLANS AND EMERGENCY RESPONSE PROCEDURE:**

#### ➤ **Motivation and HS Communication**

BAC believes in motivating employees to work safely and counseling the safety violators to make them realize why is it important to work safely. Maintaining a positive work culture in these lines will be achieved by organizing periodical awareness campaigns and through weekly toolbox talks. Fair amount of upward communication will be encouraged during these campaigns and toolbox talks, thus giving a confidence to the employees to speak out safety matters openly. Their comments and observations, if genuine, will be acted upon.

#### ➤ **Tool box talk**

This will be conducted every week by all the supervisors and the foremen to their respective workmen in a language understood by all the employees. A record of such toolbox meetings will be maintained. Subjects, which will be covered in the toolbox talks, are given below.

While taking up any new activity, the hazards likely to be faced while carrying out the job and the control measures to be followed will be explained to the workmen in the toolbox talks. This is applicable to sub contract workmen also:

## 12-SAFETY :

### Burj Al-Arab SAFETY PLANS AND EMERGENCY RESPONSE PROCEDURE:

- Unsafe conditions and unsafe acts noticed at site during the previous week lessons learnt from the accidents / near misses, if any.
- Safety precautions to be taken in the next week's work
- Safety systems and procedures to be followed at site.
- Role of workmen in preventing accidents discipline to be maintained while working near public roads and live sub stations.
- Importance of housekeeping and fire precautions activity related safety precautions.
- Safe usage of ladders, power tools.
- Electrical safety requirements.
- Fire precautions to be taken at site.
- Safe usage of hand tools.
- Procedures of manual and mechanical handling of materials.
- Safety rules related to housekeeping and site tidiness.
- Need for having safe access to the work place.
- Material storage and transportation requirements.
- Working near construction equipment and machinery.
- Health hazards.
- Personal protective appliances.
- Signs, barricades and tags.
- Usage of fire extinguishers
-

## 12-SAFETY :

### **Burj Al-Arab SAFETY PLANS AND EMERGENCY RESPONSE PROCEDURE:**

#### **❖ Safety Inspection**

The site HSE Officer will inspect the entire site on a daily basis and will give non-conformance report, if he finds any safety violation. The respective area engineer/supervisor will attend to all unsafe conditions pointed out by the HSE Officer. It will be the responsibility of the Project Manager to ensure that the suggestions given by the HSE Officer are implemented.

Site HSE Officer will ensure that all Plants and power tools at site are inspected on a regular basis by a competent person.

#### **❖ Personal Protective Equipment (PPE)**

Company will issue the required PPE to all workmen based on their operations. PPE should be worn as from the moment of entering the terminal premises and may only be taken off inside the offices the use of PPE is not limited to the project site. All PPE must meet the requirements and standards of the local regulations. Color coding for safety helmets will be as follows:

Staff and visitors : White Helmets.  
The Technicians / Labors : Yellow Helmets.  
HSE Manager/Officers : Green Helmets.

BAC logo sticker will be pasted on the safety helmet.

Site works/operations will be periodically reviewed to determine the requirement of any additional safety equipment.

The storekeeper will maintain PPE issue register for any issues made by him.

# BURJ AL-ARAB CO.

For General Contracts & Oil Services



## Some tools & machine its use for our projects

**Pull -bush for coating**



**Pull -bush for coating**



**X-ray with battery**



**Hydro test machine 250 ba**



**Holiday Detector XX-H2**



**Holiday Detector XX-H2**



# BURJ AL-ARAB CO.

For General Contracts & Oil Services



## Some tools & machine its use for our projects



BURJ AL-ARAB CO.  
For General Contracts & Oil Services



## Equipment for PHWT



Heater ceramic with clamp

Post Welding Heat Treatment Equipment



Post Welding Heat Treatment Equipment



# BURJ AL-ARAB CO.

For General Contracts & Oil Services

BURJ AL-ARAB

بـرـجـ الـعـرـبـ



بـرـجـ الـعـرـبـ لـلـعـقـودـ الـعـامـةـ وـالـخـدـمـاتـ الـنـفـطـيـةـ  
General Contracts and Oil Services

## List for NDT machine and Tools



**MT  
Test**

**X- Ray machine Direction  
XXG-3005**



**Portable Hardness  
Tester**



**Compact  
2 for RT**



**LED Rim Viewer +  
Densitometer**

# BURJ AL-ARAB CO.

For General Contracts & Oil Services

BURJ AL-ARAB

بج العرب



iiJhiwl wlx.,llg ial9ll uJJglioll  
General Contracts and Oil Services

## List for NOT machine and tools

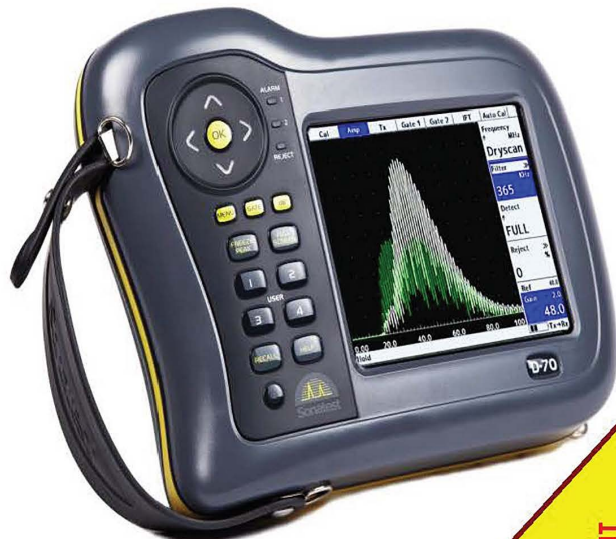
Crawler X ray xxq180KV panoramic (6" ~ 18")



DT-100  
densito  
meter



Ultrasonic flow detector



UT  
Sonic  
Test



ntest

# BURJ AL-ARAB CO.

For General Contracts & Oil Services

BURJ AL-ARAB

شركة برج العرب



شركة برج العرب  
General Contracts and Oil Services

## Some tools & machine its use for our projects



Gauge plate for pig



pig for cleaning pipe



ATLAS  
COPCO,186,400,1000,CFM,8,6& 12 BAR



**BURJ AL-ARAB CO.**  
For General Contracts & Oil Services



## Some tools & machine its use for our projects

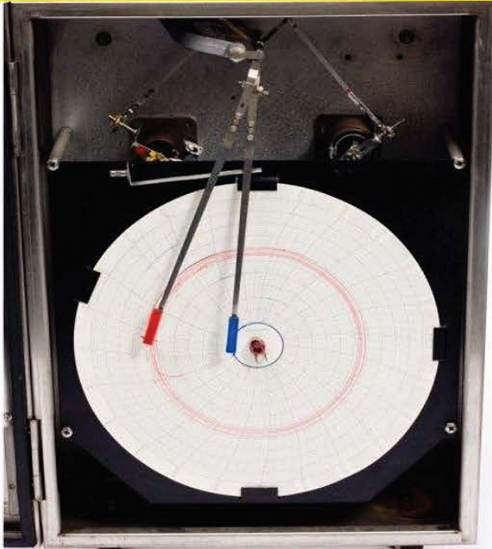
**Crawler X ray XXQ10 300kv panoramic (10" ~32")**



**V-WAC GAGE for welding**



**recorder for hydro test 500bar**



**Crawler X ray IRIS 6 180KV panoramic (6" ~18")**



# BURJ AL-ARAB CO.

For General Contracts & Oil Services



## Some tools & machine its use for our projects

**Total station TOPCAN 250**



**LEVEL DSC432**



**GPS**



**GPS**



# BURJ AL-ARAB CO.

For General Contracts & Oil Services



## Some tools & machine its use for our projects

Locater for pigging



Hardness with printer



kind of foam pig



# BURJ AL-ARAB CO.

For General Contracts & Oil Services



## Some tools & machine its use for our projects

RPD8000 Bourj arab



The BAC Pin Brazing



# BURJ AL-ARAB CO.

For General Contracts & Oil Services



## Some tools & machine its use for our projects

WELDING MACHINE FOR GTAW



FEEDER FOR WELDING MACHINE



FEEDER FOR WELDING MACHINE GMAW

WELDING MACHINE FOR GTAW



**BURJ AL-ARAB CO.**  
For General Contracts & Oil Services



# Some tools & machine its use for our projects

Alarm for X-ray



Multi-size for pigging



# BURJ AL-ARAB CO.

For General Contracts & Oil Services



Construction, QA/QC , NDT , inspection , welding technology, topographic , geo survey .

UT EQUIPMENT				
SR.	EQUIPMENT NAME	SPECIFICATION	QTY.	Mark
1	Ultrasonic flow detector	Sonatest 1008557 D-20+ Version:2.4.2012	1	
		SAS-452T	1	
		SAS-602T	1	
		SAS-702T	1	
2	Ultrasonic thickness gauge	SMART SENSOR AR850	1	
		2.5P010	1	
		5P010	2	
3	Ultrasonic thickness gauge	TM-8812 ULTRASONIC THICKNESS GAUGE	2	
<b>MT equipment list</b>				
SR.	EQUIPMENT NAME	SPECIFICATION	QTY.	Mark
1	Magnetic yoke	Y-7 AC/DC YOKE only w/ carryina case ,220v	2	
		220v MY-2 maanetic yoke	1	
		PM2000 permanent magnetic lvoke with Artie leas	2	
		400ml cans Ardrex 8903 - white contrast	200	
		400ml Ardrex 8032 -black maQnetic ink	200	
		VGM gauss meter with battery ,charQer, tanQential field	1	
2	Black light	Maxima 3500/F 220VAC W/F	2	
3	Circular	PL 105 AC coils with carrying case,220VAC	3	
4	accessories	Pie GauQe	3	
		UV meter	1	
		Gauss meter	2	
		Lux meter	1	

# BURJ AL-ARAB CO.

For General Contracts & Oil Services



Construction, QA/QC , NDT , inspection , welding technology, topographic , geo survey .

PT equipment list				
SR.	EQUIPMENT NAME	SPEC IFICATION	QTY.	Mark
1	Visual dye penetrant cans	Solvent removable	Multi	
		Water washable	Sets	
3	Florescent Dye penetrant cans	Solvent removable	Multi	
		Water washable	Sets	
5	Back light	Maxima 3500/F220VAC w/flood bulb	2	
		Star-lite VJ lamp with 220 VAC power supply	2	
RT equipment list				
SR.	EQUIPMENT NAME	SPEC IFICATION	QTY.	Mark
1	X- Ray machine	Crawler X ray IRIS 6 180KV panoramic (6" ~ 18")	2	
2	X- Ray machine	Crawler X ray IRIS 10 300kv panoramic (10' ~32")	3	
3	X- Ray machine	Diraction XXG-2505	2	
4	X- Ray machine	Diraction XXG-3005	2	
5	X- Ray machine	Diraction XXHA-1605 ( 60-160) KV	2	
6	X- Ray machine	Diraction XXQ-1605 (60-160) KV	2	
7	X- Ray machine	Diraction XXQ-3005 (150-300) KV	2	
8	Films, processing chemicals	Mobile dark room	1	
9	Automatic film processors	Automatic film processors M35 PROTEC	1	
10	Automatic film processors	Manual film processor	1	
11	Films	KODAK AA400 & MX126 film roll 10cm&7cm *100m, 10*24cm, 10*48cm boxes	MULTI	
12	Automatic film processors	compact2 SX2 119x-y-000 certificate no:375503 QM08	1	

# BURJ AL-ARAB CO.

For General Contracts & Oil Services



Construction, QA/QC , NDT , inspection , welding technology, topographic , geo survey .

14	Radiographic Film Image Scale	Film image scale for ASME	2	MOD.1-IND
15	Radiographic Film Image Scale	Film image scale for API	1	
16	Viewer with built-in Densitometer	LC NOT FV-2009-T LED Film Viewer with built-in Densitometer	2	
17	ESECO 21-Step Tablet	Film densitometer eseco /USA	1	
18	Safety	Personal radiographic safety		
		Single side lead apron	4	
		ERA99-A Environmental radiation alarm V3	3	
		Dosemeters inspector A06941	5	
		Radiographic alarms	2	
		<b>visual inspection</b>		
SR.	Equipment name	Specification	QTY	Mark
1	Visual inspection kits	Welding gauges ,flexible mirrors, magnification lends ,calipers ,filler gauges, fillet weld gauges .pitting gauges.	multi	
2	Videoscope	3 meter length	1	
3	Miniscope	25 meter length	1	
4	Digital thermometer	Response Time & Wavelength 500ms & (8-14)um - 50-550c	4	
5	Visual inspection kits	1-Flexible Mirrors	4	
		2-Magnification lens	1	
		3-Lighted microscope 40x with scale /Netherlands	1	

# BURJ AL-ARAB CO.

For General Contracts & Oil Services



Construction, QA/QC , NDT , inspection , welding technology, topographic , geo survey .

CATHODIC PROTECTION EQUIPMENT				
Sr.	Equipment Name	Specification	QTY	Mark
1	Refrenca Electrode	Cu/CUS04	2	
2	Refrenca Electrode	Aq/AqCi	1	
3	Pin Brazing Machine	BAC MK#11	2	
4	Diaital Multimeter	Fluke	3	
PLASTING & PAINTING TEST EQUIPMENT LIST				
SR.	EQUIPMENT NAME	SPEC IFICATION	QTY.	Mark
1	Digital pit gauge	MG-NDTS-DPG-1 (USA)	2	
2	Surface profile	Sp1560 surface profile gauge (roughness gauge) /Netherlands	1	
3	surface preparation test kit	(bresel test) according to ISO 8502-6&9	1	
		(dust test kit ) according to 8502-3	1	
		(paint inspection mirror)	1	
		(DC?00 dew check) according to ISO 8502-4	1	
		(sp3600 spring leaded roller)	1	
		(uv-inspection flashlight) according to ASTM E2501	1	
		(coating multiterster) according to ASTM D3359	1	
4	Coating thickness meters	SMART SENSOR AR931 FILM/COArn	1	
		2-Positector 6000 series (non magnetic on frrouse)/USA	1	
		3-Qnix 8500 (non magnetic on ferrouse)/Germany	3	
5	Positector &coating inspection kits	SPG 1-E(roughness )&FS1(coating)&DPM (dew point) DEFLESCO/USA	2 kit	

# BURJ AL-ARAB CO.

For General Contracts & Oil Services



Construction, QA/QC , NDT , inspection , welding technology, topographic , geo survey .

SR.	EQUIPMENT NAME	SPECIFICATION	QTY.	Mark
1	Holiday detector for rubber and epoxy coated	De porosity detector DC30 with pipeline accessories . PCWI/Australia	3	
2	Shore durometer	Digital durometer DD-3	1	
3	Rubber thickness gauge	Elastik ASTM D3767	1	

HYDROSTATIC TEST EQUIPMENT				
SR.	EQUIPMENT NAME	SPECIFICATION	QTY.	Mark
1	Filling pump	Multi stage pump 125 M3 P50 bar	1	
2	Filling pump	Multi stage pump 90M3 P24 bar	1	
3	Filling pump	Multi stage pump 18M3 P16 bar	1	
4	Filling pump	Single stage pump 5 m3 p=5 bar	3	
5	Hydrostatic pump	P 150 bar ,Q=160 l/miin	1	
		P 280 bar Q=15 l/min	1	
		P 200 bar Q=15 l/min	1	
		P 100 bar Q=10 l/min	3	
		P 70 bar Q=4 l/min	1	
		Manual 50 bar max	1	
6	Pressure gauge	WIKA	15	
78	Dead weight tester	Druke ,yantrika O-250 bar ,0 -1000 bar	3	
9	Circular chart recorder	ROTOTHERM 12/D/248/X" chart 2 pen (pressure &temp.)	2	
10	dew point		2	
11	gauge disc .pig&foam	6 ,8 ,10 ,16 ,20.28 inch size	2	
12	Air compressor	ATLAS COPCO, 186,400, 1000,CFM,8,8&12	3	
		KASER 700CFM 12 BAR	2	

# BURJ AL-ARAB CO.

For General Contracts & Oil Services



Construction, QA/QC , NDT , inspection , welding technology, topographic , geo survey .

HARDNESS TEST				
SR.	EQUIPMENT NAME	SPECIFICATION	QTY.	Mark
1	HARDNESS TESTER	URNDT digital hardness tester	1	
2	HARDNESS TESTER	DEMEQ QH5 sin 213	1	
3	HARDNESS TESTER	MH180 hardness tester	1	
<b>construction</b>				
SR.	EQUIPMENT DESCRIPTION	SPECIFICATION	QTY.	Mark
1	Welding machines	( SMAW ,GTAW ,GMAW)	50	
2	Piping clamps	External and enternal	For each size	
3	Pipe layer	(CAT 572 & 583)	4	
4	pickup	1, 2TONS	10	
5	Grinding machine	G-max High Tech-GT11132	50	
6	Beveling and cutting machines	Mechanical multi sizesas	4	
7	Crane trailer		2	
8	Fork lift	2 & 5 tons	2	
9	Mobile crane	10 to 20 tons	3	
10	HOD Horizontal drilling machine	Horizontal Directional Drilling Rig JL-35 1.power: 160kw/2200rpm 2.drill rod:76*3000 mm 3.weight:13000 kg 4 ISO9001	2	
11	HOD Horizontal drilling machine	JJU-1.8TON-6000N.mCertifirmion: ISO900 I Drill rod: 60mm*3m	2	
12	Sand blasting machine	00100-.8 Mpa-.2m3 Qingdao joint	2	
13	Air compressor	150 to 1000 CFM 7,8&13 BAR	3	
14	Tool boxes		15	
15	Generator	diesel generators Perkins generator 36kw 45kva 1103A-33TG1	10	
16	Measuring and alignment tools	HI-LO Welding Gage	2	
16	Safety Equipment ,tools	handel electrode ,cabel, ....	multi	
17	chaltars	Dia/2x2x2.5m	12	

# BURJ AL-ARAB CO.

For General Contracts & Oil Services



Construction, QA/QC , NDT , inspection , welding technology, topographic , geo survey .

HSE equipment				
SR.	EQUIPMENT NAME	SPECIFICATION	QTY.	Mark
1	Gas detectors	Portable Co,H2s,O2,Ch4/lcl Multi 4 Gas Detector-GM-2000-C	6	
2	Warning tapes		MULTI	
3	Warning signs		MULTI	
4	First aid		MULTI	
<b>topographic survey</b>				
SR.	EQUIPMENT DESCRIPTION	SPECIFICATION	QTY.	Mark
1	Total station	TRIMBLE M3	3	
2	DGPS WORKS	Topcon GR3	2	
3	GPS	GARMIN	4	
4	LEVELS	NAK2	6	
5	RPD8000 buried pipes and cable	Auto testing machine ccc,ISO9001-2008	2	
6	Software	Arc info (GIS) 9.3		
7		Autocad ver 2015		
8		Erdas 9.2 for image processing		
<b>instrumentation</b>				
SR.	EQUIPMENT DESCRIPTION	SPECIFICATION	QTY.	
1	Digital multi-meter	(FLUE 179)	4	
2	Dead weight tester	GE 20-700 bar	1	
3	Hydraulic Dead Weight Testers	Yantrika 1--250 bar	2	
4	Digital portable calibrators	( Scandura ) (B-20)	1	
5	Ovens Temp. switch	0-150C	15	
6	Electrode Oven	automatic control ZYHC-100 0-500C	2	
7	Documenting process calibration	Fluke 744	1	

# BURJ AL-ARAB CO.

For General Contracts & Oil Services



Construction, QA/QC , NDT , inspection , welding technology, topographic , geo survey .

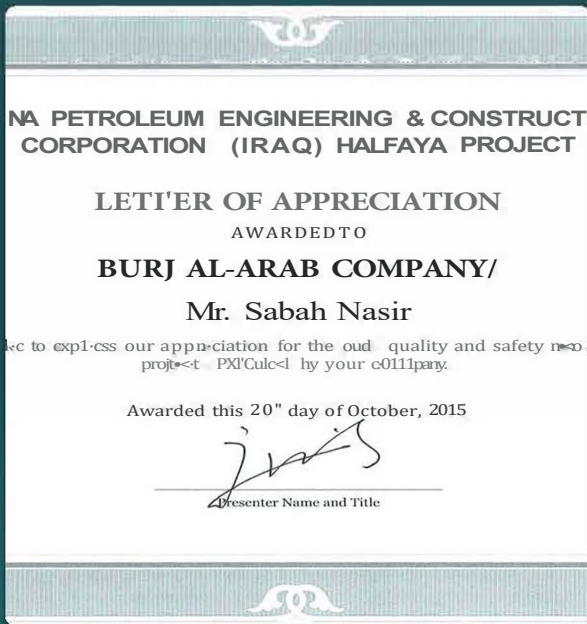
10	4-20 mA Simulators	ALFA	1	
11	Pressure calibrator	Fluke 718	2	
12	Multi function calibrator	Fluke 725	2	
13	Loop calibrator	Fluke 715	4	
<b>PWHT Equipment</b>				
SR	EQUIPMENT DESCRIPTION	DESCRIPTION	QTY.	
1	Heat treatment machine	ENWDJK-180380V, 180KW-6Loops ,T0-1 000C(135AX6)PID	7	
		With channel chart recorder	6	
2	Generator	diesel generator with Perkins engine 1106A-70TAG2 / 1006- 6TAG2, 120kw/150kva	8	
3	Cable	Twin cable set 2 x 25 mm	84	
4	Compensating cable	Compensating cable NiCr-Ni	84	
5	Splitter cable	Splitter cable , 2- way 2 x6 ,3m, 120A	84	
6		Splitter cable 3-way ,3 x 6, 3m 180A	84	
7		Fine point attachment unit TP 2	7	
8		For thermocouple diameter 0.5 to 0.711mm	50	
9		With carrying case	4	
10	thermocouple	Thermocouple wire NiCr-Ni , 2 x 0.5mm	50	
11	Heater ceramic	Ceramic pad heater ,various design ,60V.45A ,2.7KW, Various	250	
12	paper	Folding paper for BH 60-6/BH 60- 12, 16M	40	
13	Thermocouplings	Thermocouplings (sockets) NiCr-Ni	102	
14	Thermos-olua	Thermos-olua NiCr-Ni	56	
15	rope heater	Wraparound 6,8, 10, 16 inch,60 v ,5,4kw	50	
16	fiber mat	Ceramic fiber mat (thickness 25mm)\ Bale=3.46 m <sup>2</sup>	180	

# BURJ AL-ARAB CO.

For General Contracts & Oil Services



## APPRECIATION LETTERS



# BURJ AL-ARAB CO.

For General Contracts & Oil Services

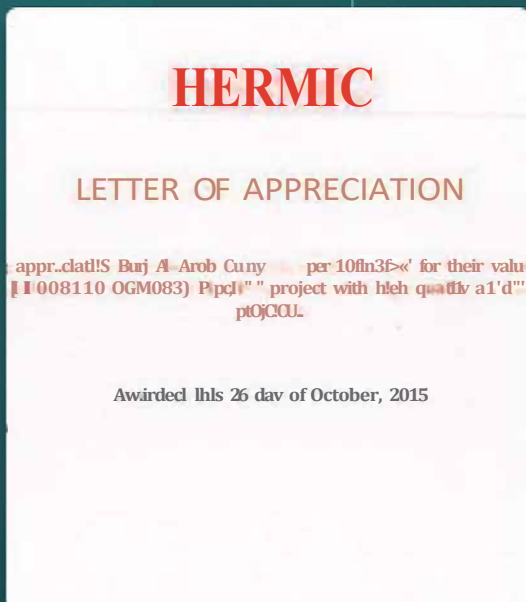
BURJ AL-ARAB

بـرج الـعـرب



بـرج الـعـرب  
General Contracts and Oil Services

## APPRECIATION LETTERS

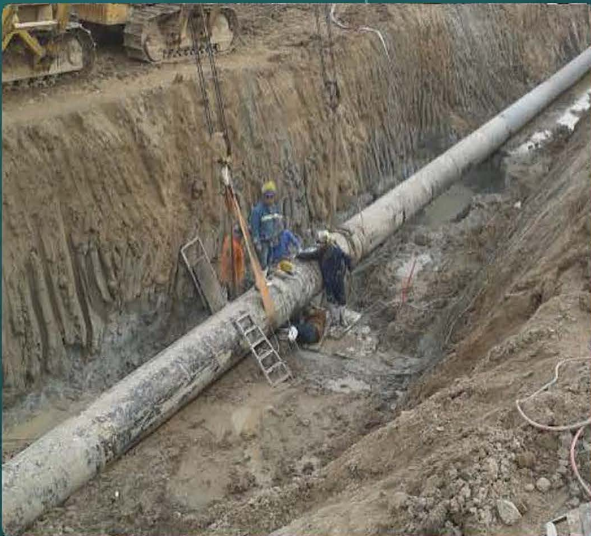


# BURJ AL-ARAB CO.

For General Contracts & Oil Services



## SOME PHOTOS FOR OUR PROJECTS



# BURJ AL-ARAB CO.

For General Contracts & Oil Services



## SOME PHOTOS FOR OUR PROJECTS



# BURJ AL-ARAB CO.

For General Contracts & Oil Services



## SOME PHOTOS FOR OUR PROJECTS



# BURJ AL-ARAB CO.

For General Contracts & Oil Services



## SOME PHOTOS FOR OUR PROJECTS



# BURJ AL-ARAB CO.

For General Contracts & Oil Services



## SOME PHOTOS FOR OUR PROJECTS



# BURJ AL-ARAB CO.

For General Contracts & Oil Services



## SOME PHOTOS FOR OUR PROJECTS



# BURJ AL-ARAB CO.

For General Contracts & Oil Services



## SOME PHOTOS FOR OUR PROJECTS



# BURJ AL-ARAB CO.

For General Contracts & Oil Services



## SOME PHOTOS FOR OUR PROJECTS



# BURJ AL-ARAB CO.

For General Contracts & Oil Services



## SOME PHOTOS FOR OUR PROJECTS



# BURJ AL-ARAB CO.

For General Contracts & Oil Services



## SOME PHOTOS FOR OUR PROJECTS



# BURJ AL-ARAB CO.

For General Contracts & Oil Services



## SOME PHOTOS FOR OUR PROJECTS

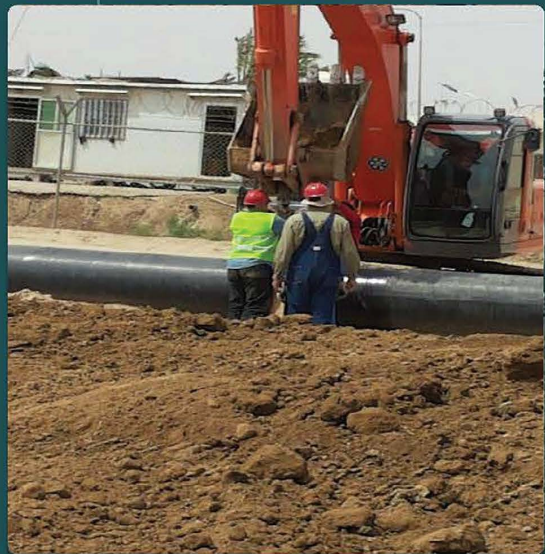


# BURJ AL-ARAB CO.

For General Contracts & Oil Services



## SOME PHOTOS FOR OUR PROJECTS

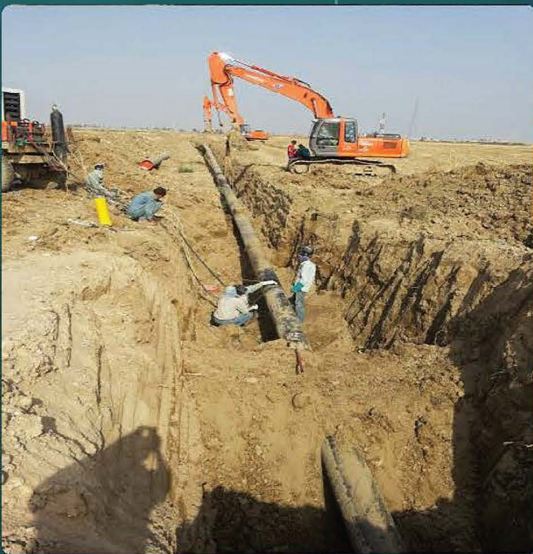


# BURJ AL-ARAB CO.

For General Contracts & Oil Services



## SOME PHOTOS FOR OUR PROJECTS

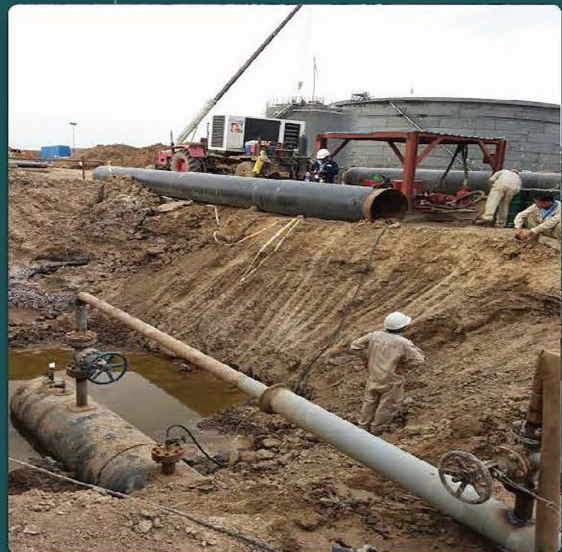


# BURJ AL-ARAB CO.

For General Contracts & Oil Services



## SOME PHOTOS FOR OUR PROJECTS

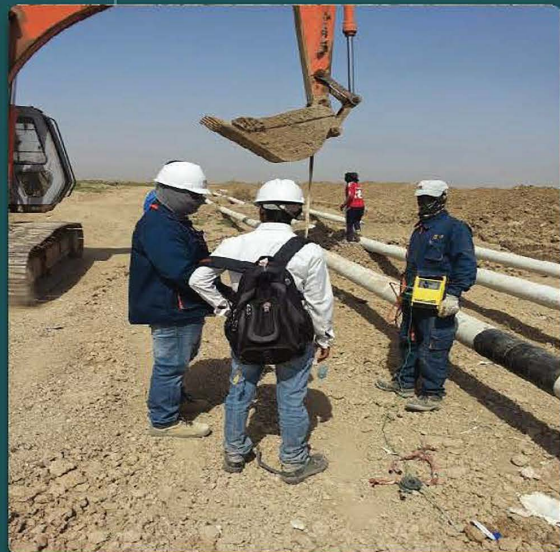


# BURJ AL-ARAB CO.

For General Contracts & Oil Services



## SOME PHOTOS FOR OUR PROJECTS

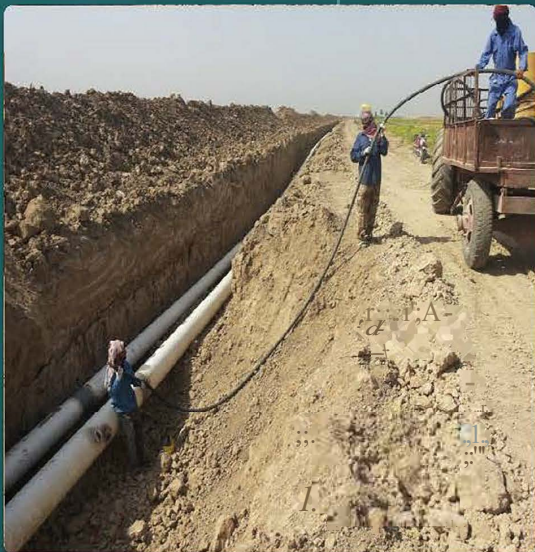


# BURJ AL-ARAB CO.

For General Contracts & Oil Services



## SOME PHOTOS FOR OUR PROJECTS

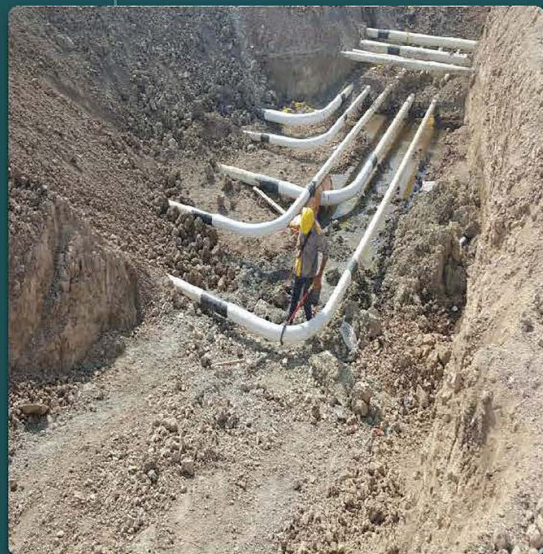
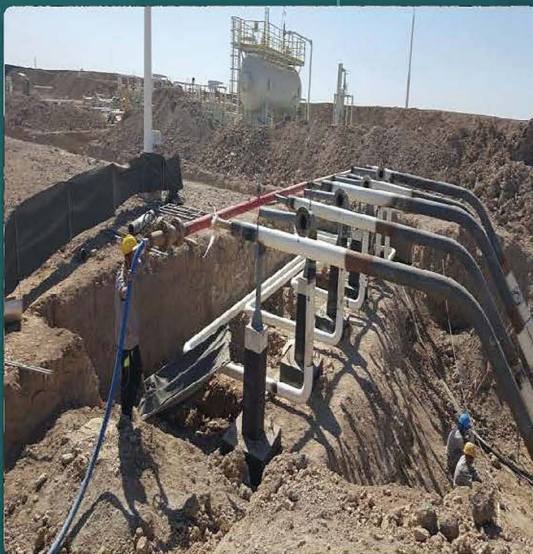


# BURJ AL-ARAB CO.

For General Contracts & Oil Services



## SOME PHOTOS FOR OUR PROJECTS

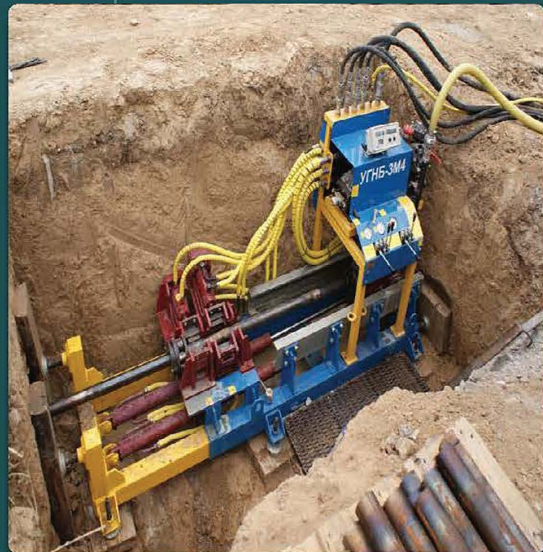
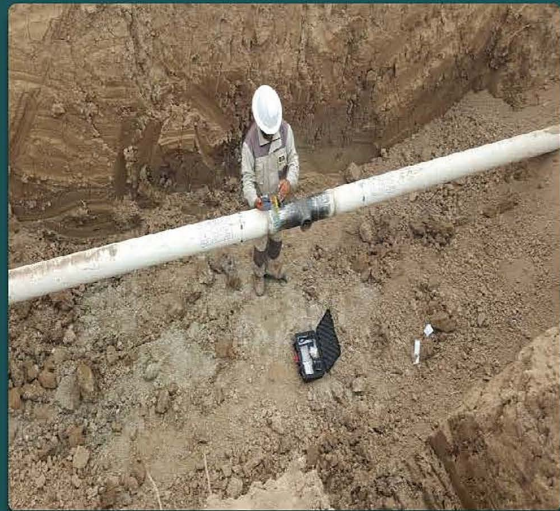


# BURJ AL-ARAB CO.

For General Contracts & Oil Services



## SOME PHOTOS FOR OUR PROJECTS

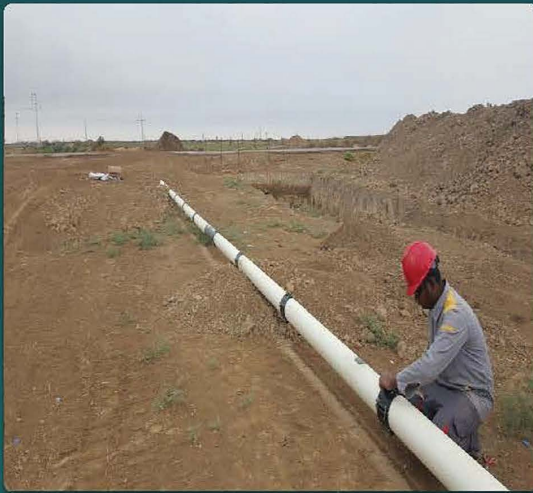


# BURJ AL-ARAB CO.

For General Contracts & Oil Services



## SOME PHOTOS FOR OUR PROJECTS

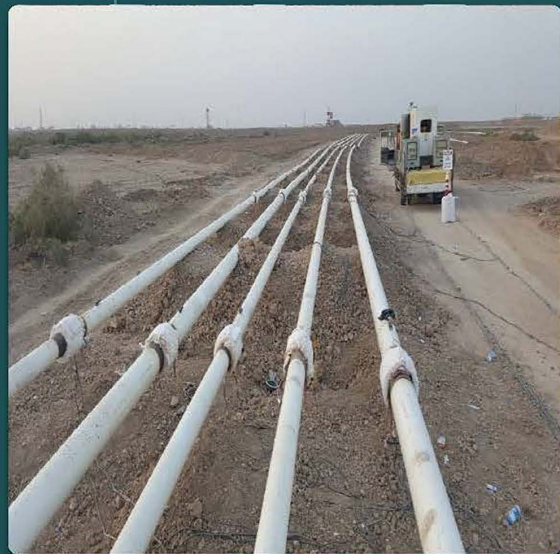
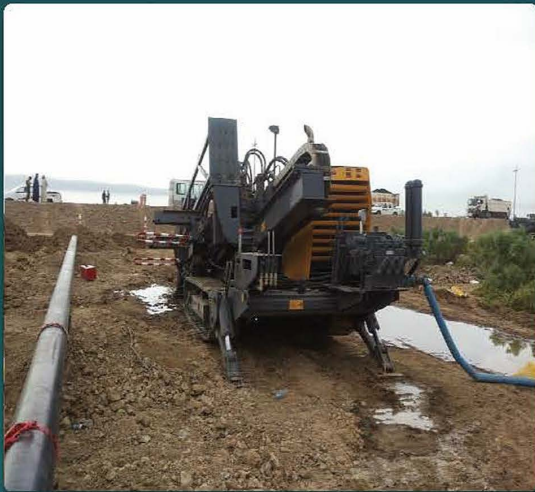


# BURJ AL-ARAB CO.

For General Contracts & Oil Services



## SOME PHOTOS FOR OUR PROJECTS



# BURJ AL-ARAB CO.

For General Contracts & Oil Services



## SOME PHOTOS FOR OUR PROJECTS



# BURJ AL-ARAB CO.

For General Contracts & Oil Services



## SOME PHOTOS FOR OUR PROJECTS



# BURJ AL-ARAB CO.

For General Contracts & Oil Services



## SOME PHOTOS FOR OUR PROJECTS

